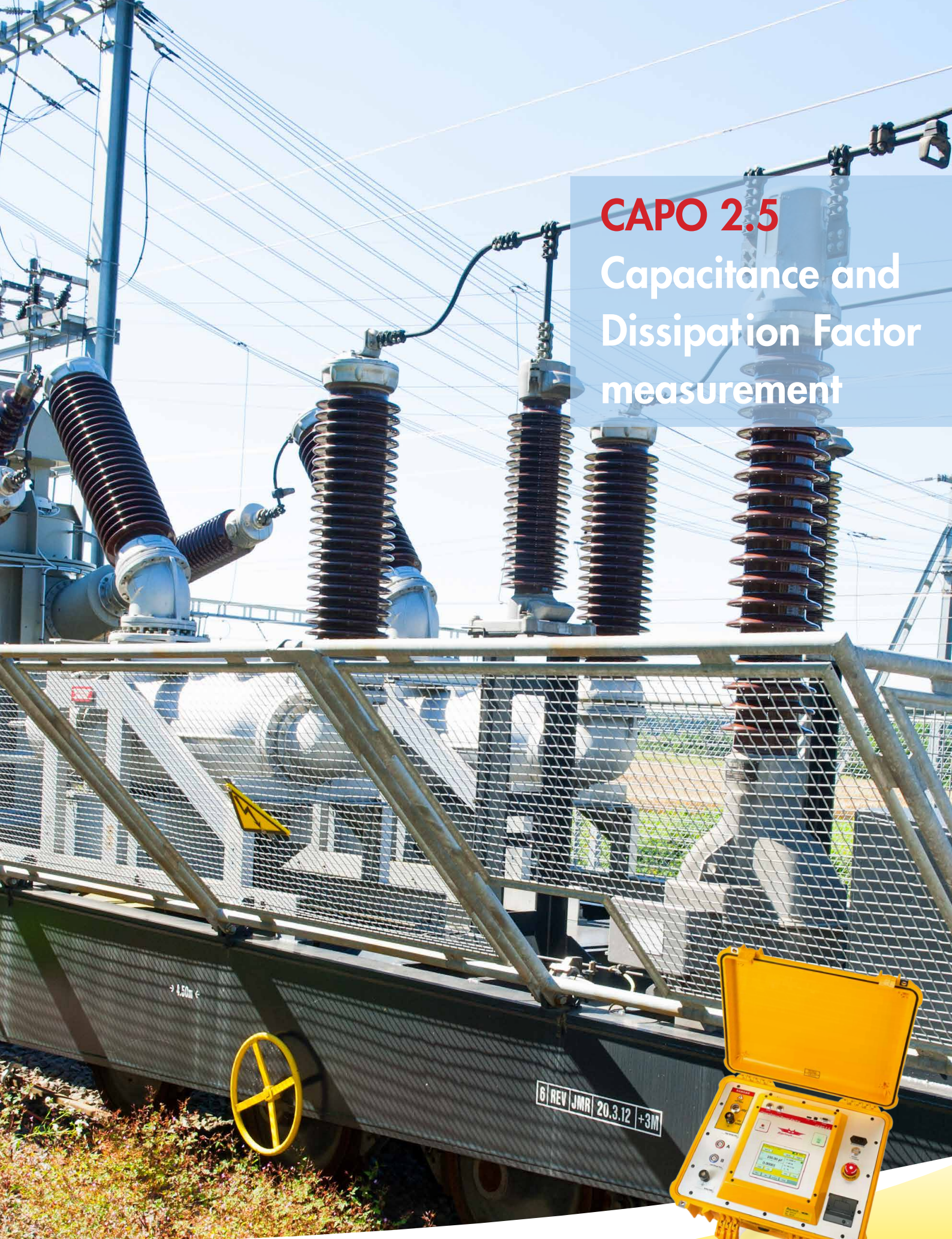


# CAPO 2.5

## Capacitance and Dissipation Factor measurement





The CAPO 2.5 is specially designed for fast and easy field measurement, with the well known high precision and quality of Raytech. It is a world unique, line- or **battery-operated** instrument, built into a portable rugged case, making it perfect for field use.

Operating range -10°C to 60°C  
 Input power 88 to 264 VAC  
 47 ... 63 Hz

**Measured values:**

Dissipation Factor  $\tan \delta$   
 Power Factor  $\cos \varphi$   
 Capacitance  
 Inductance  
 Quality Factor  
 Power (Watts)  
 Power@10kV



CAPO 2.5

**Measurement Parameters**

	Range	Accuracy	Resolution
Dissipation Factor $\tan \delta$	0 ... 0.1	$\pm 0.5\% \text{ Rdg} \pm 1 \times 10^{-4}$	$1 \times 10^{-5}$
	0.1 ... 1	$\pm 0.5\% \text{ Rdg} \pm 1 \times 10^{-4}$	$1 \times 10^{-4}$
	>1	$\pm 0.5\% \text{ Rdg}$	3 Digits
Power Factor $\cos \varphi$	0 ... 0.1	$\pm 0.5\% \text{ Rdg} \pm 1 \times 10^{-4}$	$1 \times 10^{-5}$
	0.1 ... 1	$\pm 0.5\% \text{ Rdg} \pm 1 \times 10^{-4}$	$1 \times 10^{-4}$
Capacitance @ 50 Hz	0.00pF ... 1.3μF @ 500V	$\pm 0.3\% \text{ Rdg} \pm 0.3\text{pF}$	0.01pF or 5 Digits
	0.00pF ... 254nF @ 2.5 kV		
@ 60 Hz	0.00pF ... 1.1μF @ 500V	$\pm 0.3\% \text{ Rdg} \pm 0.3\text{pF}$	0.01pF or 5 Digits
	0.00pF ... 212nF @ 2.5 kV		
Test Voltage	up to 2500V <sub>rms</sub> (45 ... 400Hz)	$\pm 0.5\% \text{ Rdg} \pm 1\text{V}$	1V
Test Current	up to 200mA <sub>rms</sub>	$\pm 0.3\% \text{ Rdg} \pm 1\mu\text{A}$	0.1μA or 4 Digits
Output Power	0 ... 500 VA		
Output Frequency	10Hz - 400Hz (Step 0.5Hz)	$\pm 0.01\%$	0.1Hz

**Features**

- Battery operated, world unique
- Built-in Standard Capacitor
- Test Frequency 10 Hz - 400 Hz
- Easy export of results by USB key
- External switch for safe operation
- Internal thermal printer

**Accessories**

- Cable bag including standard cable set:
  - HV-cable 10m
  - 2 measurement cables 10m
  - Safety switch 2m
  - HV-ground 10m
  - Safty ground 10m
  - Power cord depending on country of distribution
- 2 Paper Rolls
- Instruction Manual

**Specifications****Model**

CAPO 2.5

**Size**

L: 521mm (20.5")

W: 432mm (17")

H: 216mm (8.5")

**Weight**

22.2 kg (48.9 lbs.)

**Interfaces**

USB 2.0 full speed (1 host, 1 device)  
 and 9 Pin RS232 serial

**Memory Storage**

Internally stores more than  
 10 000 test results

**Panel Display**

5.7" Color LCD with LED back lighting

**Front Panel**

Sealed, Anodized

- TP 01: External temperature probe
- Safety switch 10m



Raytech GmbH

Oberebenenstrasse 11

CH-5620 Bremgarten

www.raytech.ch

Phone +41 56 648 60 10

Fax +41 56 648 60 11

welcome@raytech.ch

Specifications subject to improvement at any time.

